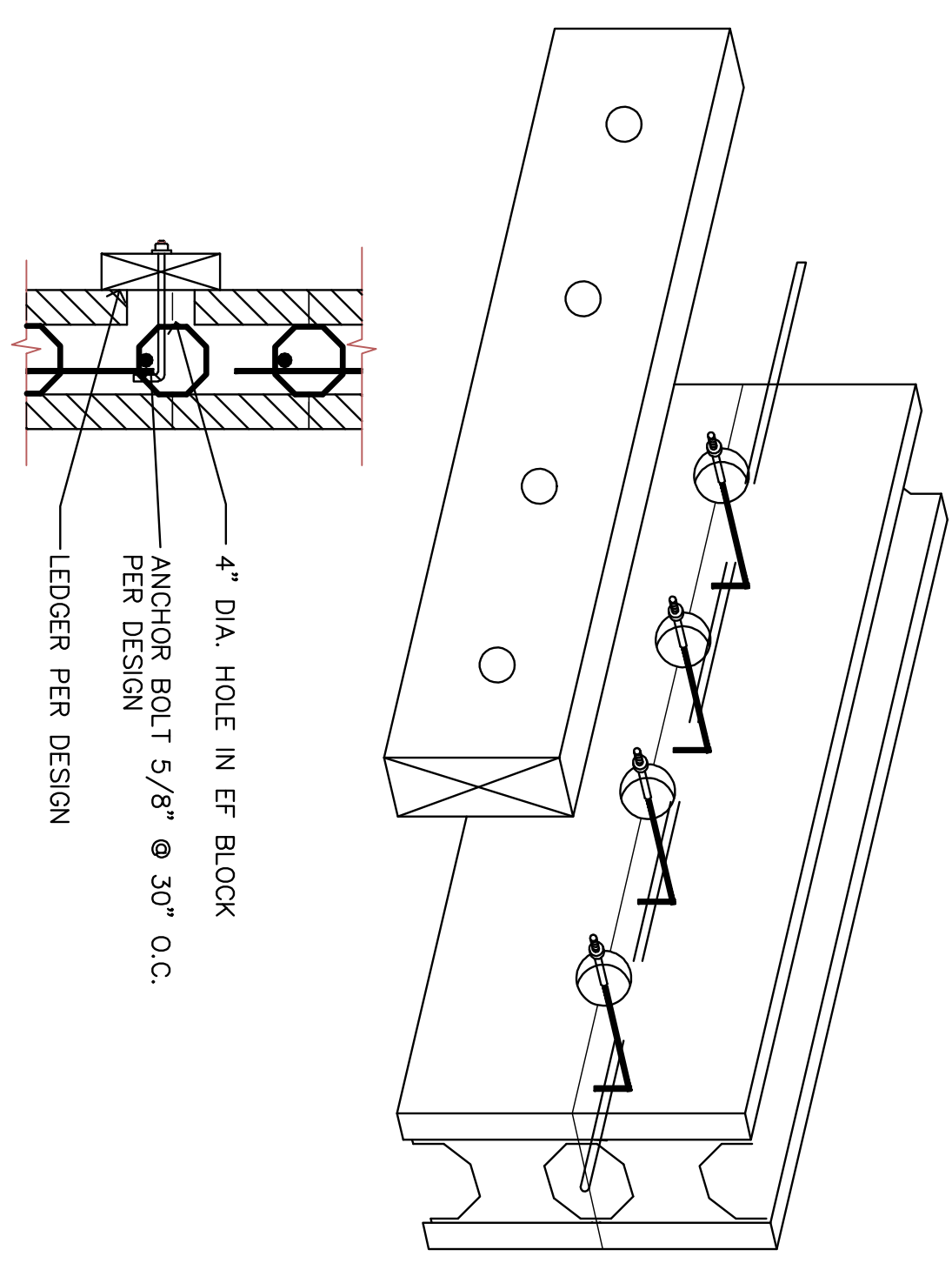
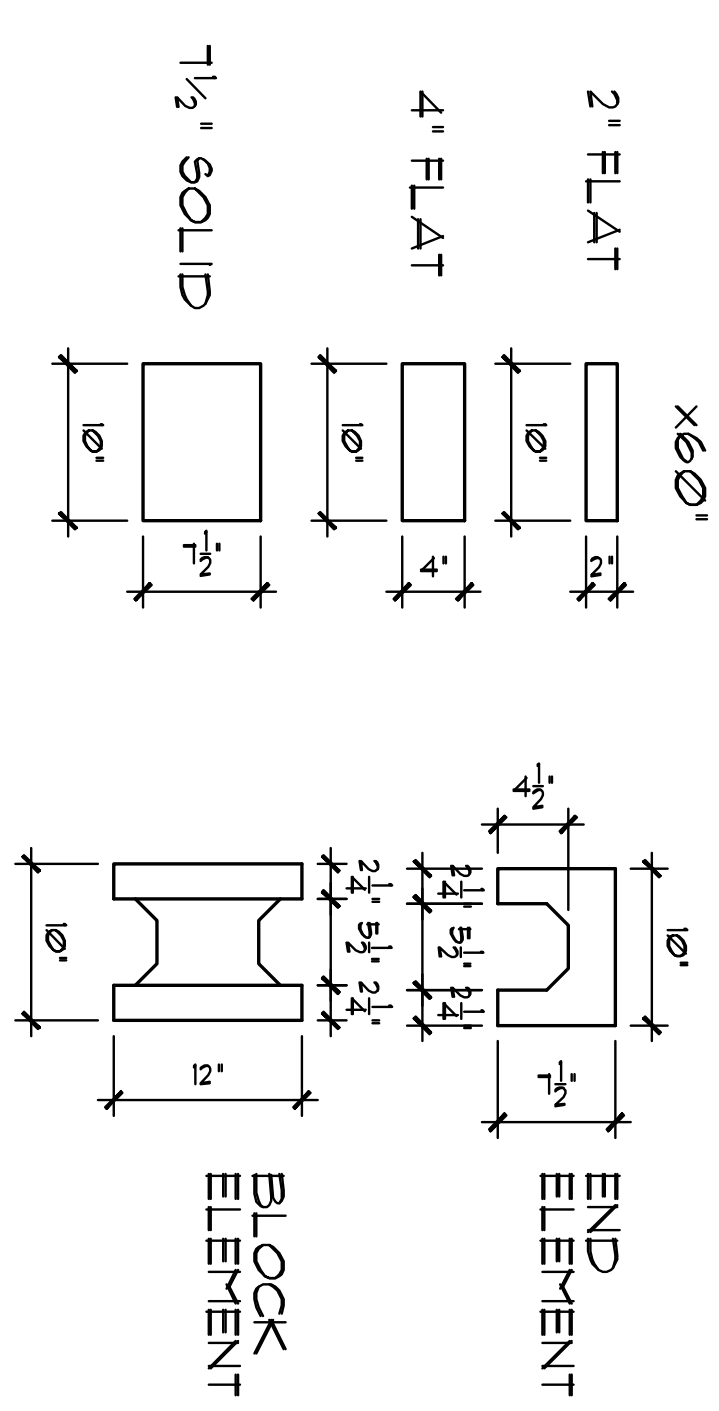


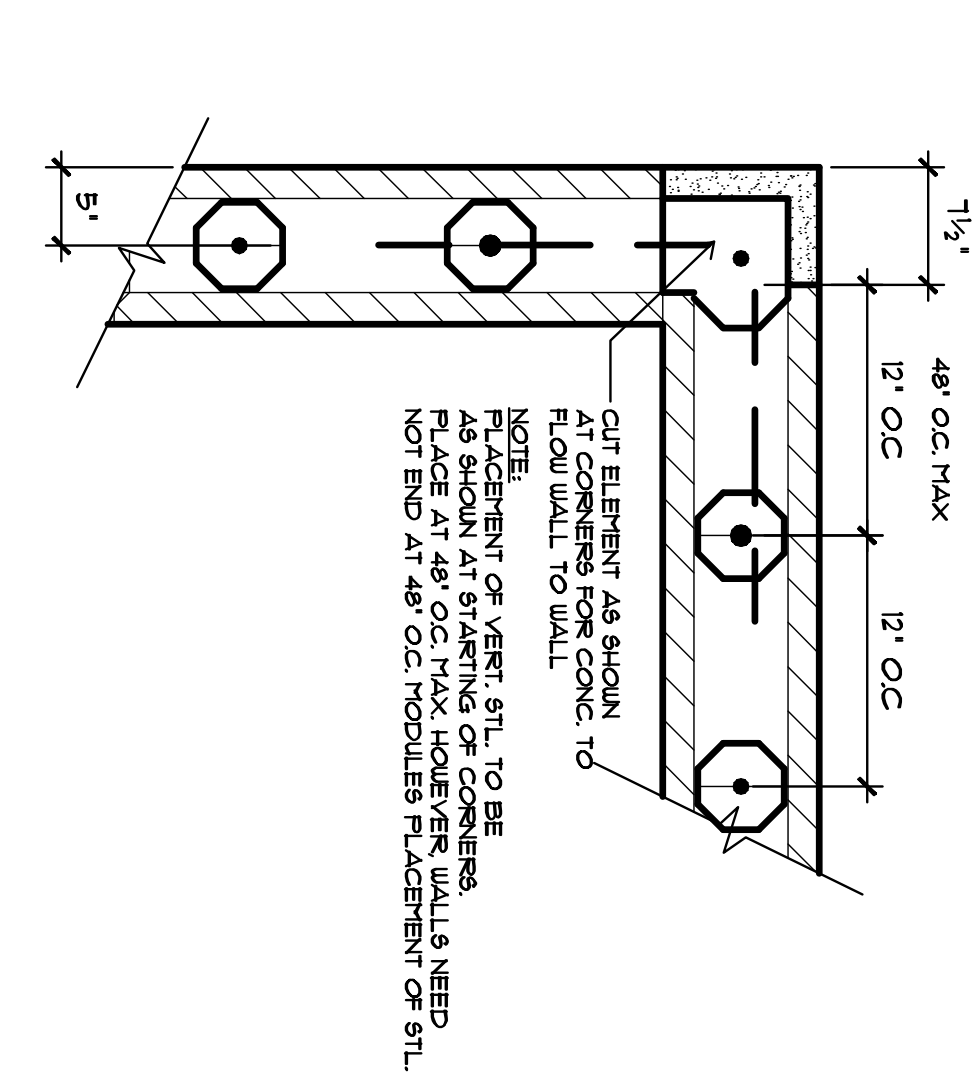
4 ROOF BEARING DETAIL  
SCALE: 1" = 1'-0"



3 LEDGER DETAIL  
SCALE: 1" = 1'-0"

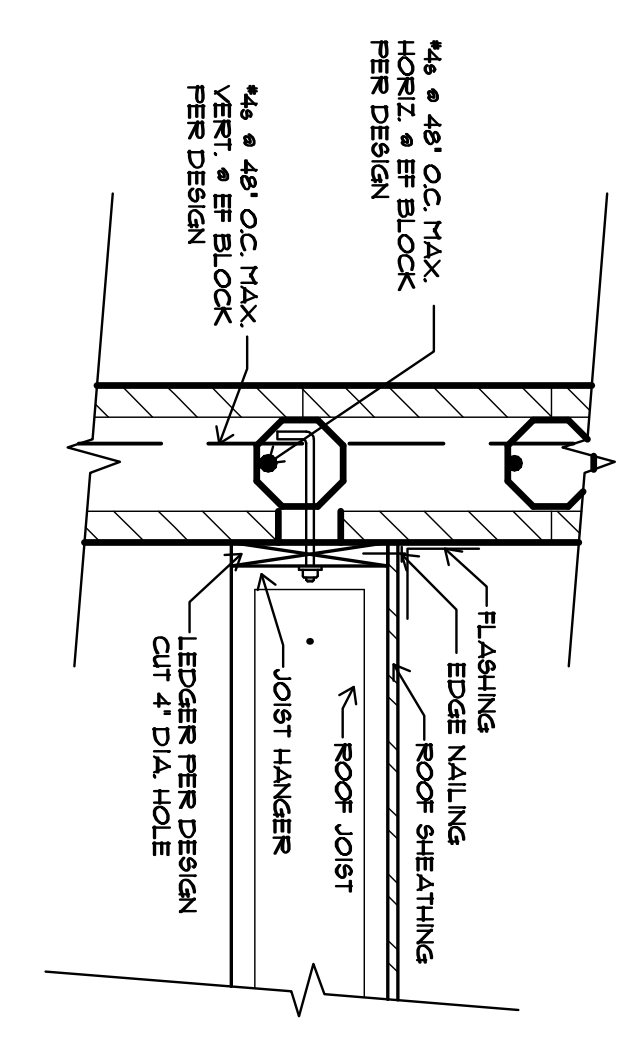


2 WALL ELEMENTS  
SCALE: 1" = 1'-0"

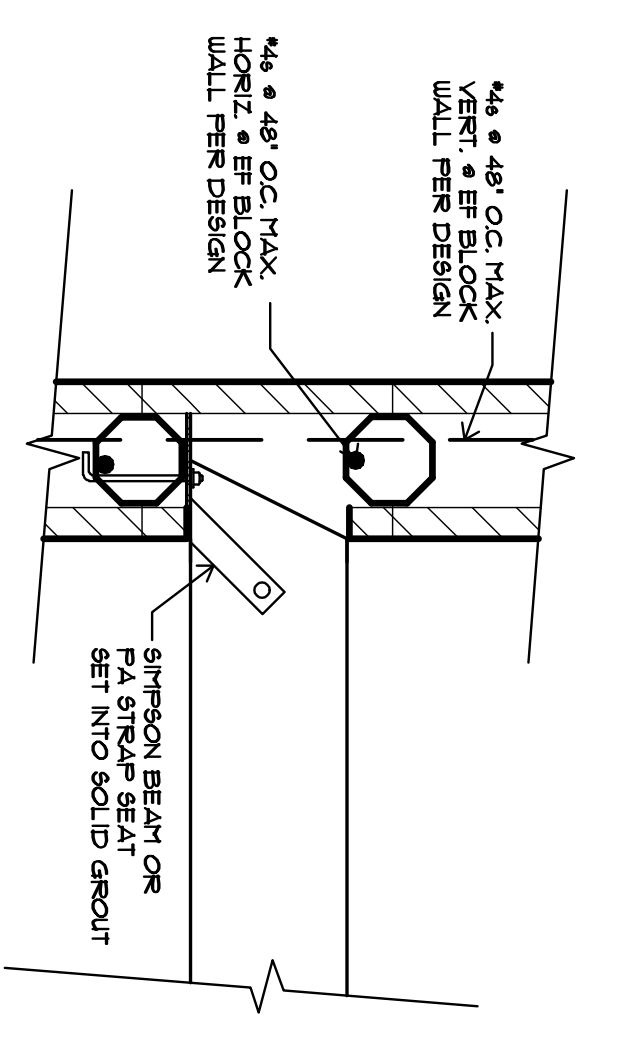


1 CORNER DETAILS  
SCALE: 1" = 1'-0"

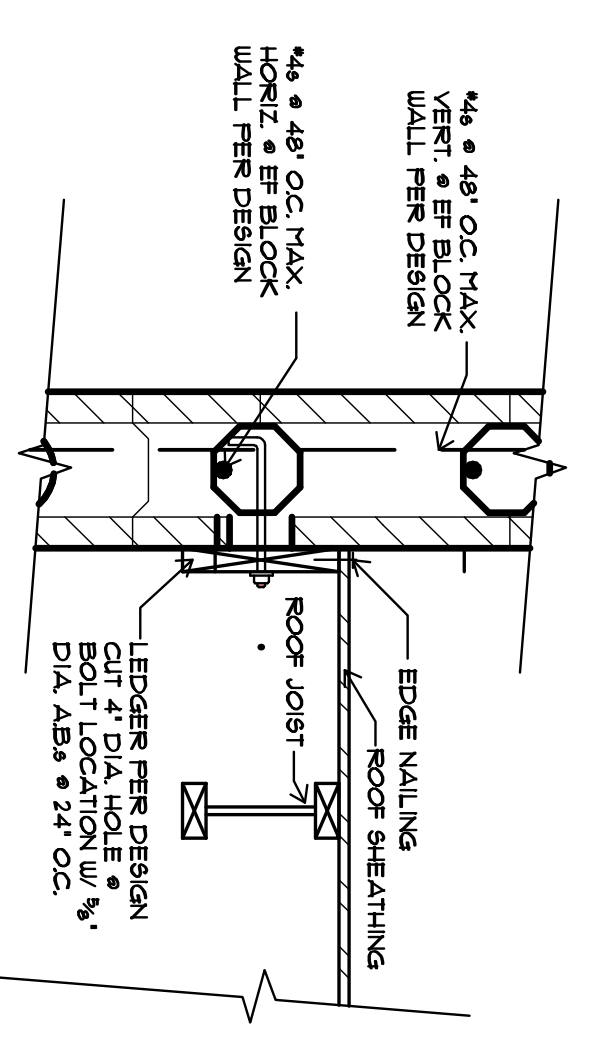
- EF BLOCK NOTES**
1. EF BLOCK MUST BE GROUTED SOLID W/ MIN. 2500 PSI CONCRETE.
  2. PLACING OF CONCRETE INTO THE CORES MUST BE ACCOMPANIED IN ACCORDANCE WITH SECTION 05 10 00 (SEE 05 10 00).
  3. REINFORCING  $f_y = 40,000$  P.S.I. A-615 GRADE 40.
  4. THE CONCRETE GROUT MUST HAVE A MINIMUM COMPRESSIVE STRENGTH OF 28 DAYS WITH A SLUMP OF 2\"/>



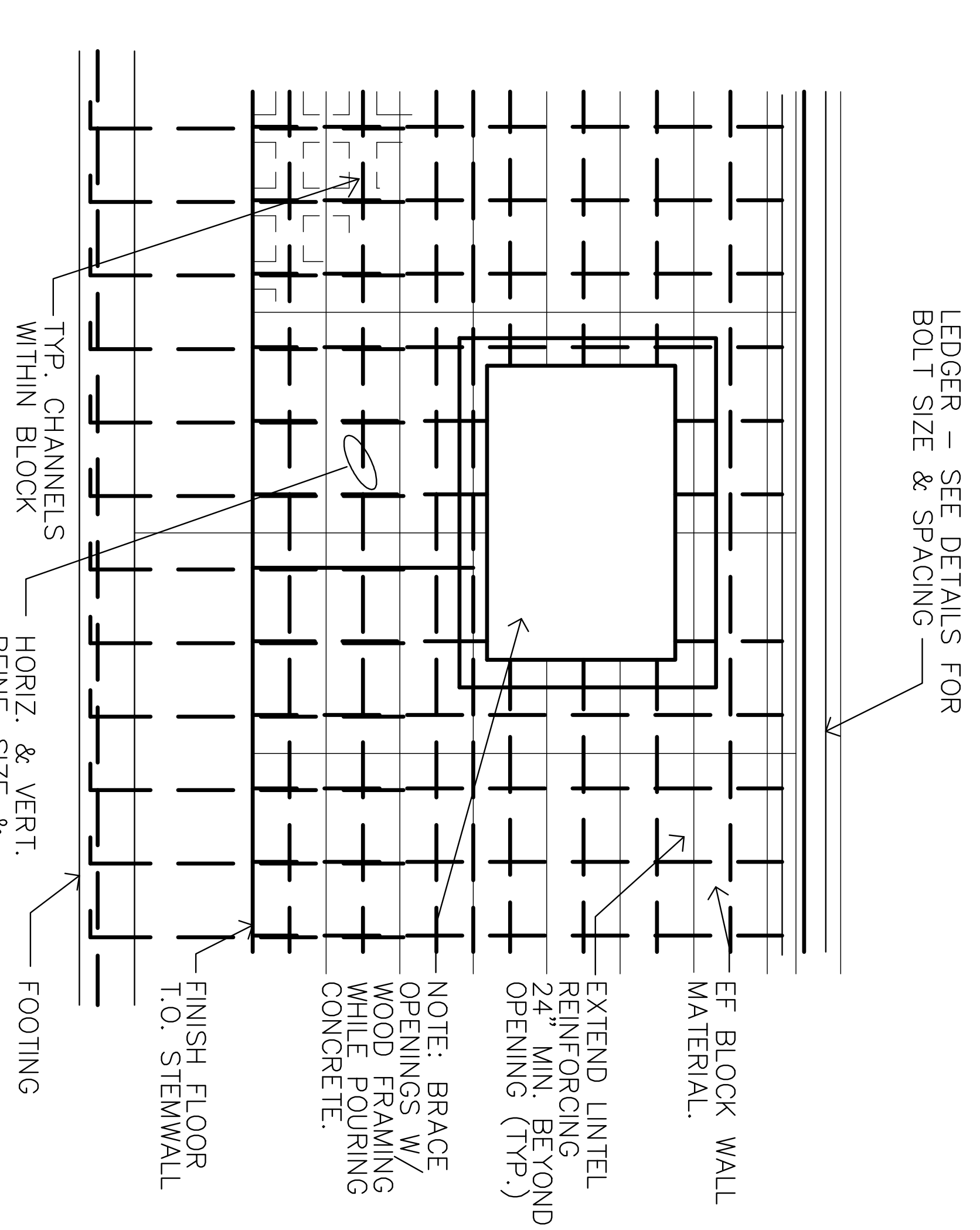
8 LEDGER AT WALL  
SCALE: 1" = 1'-0"



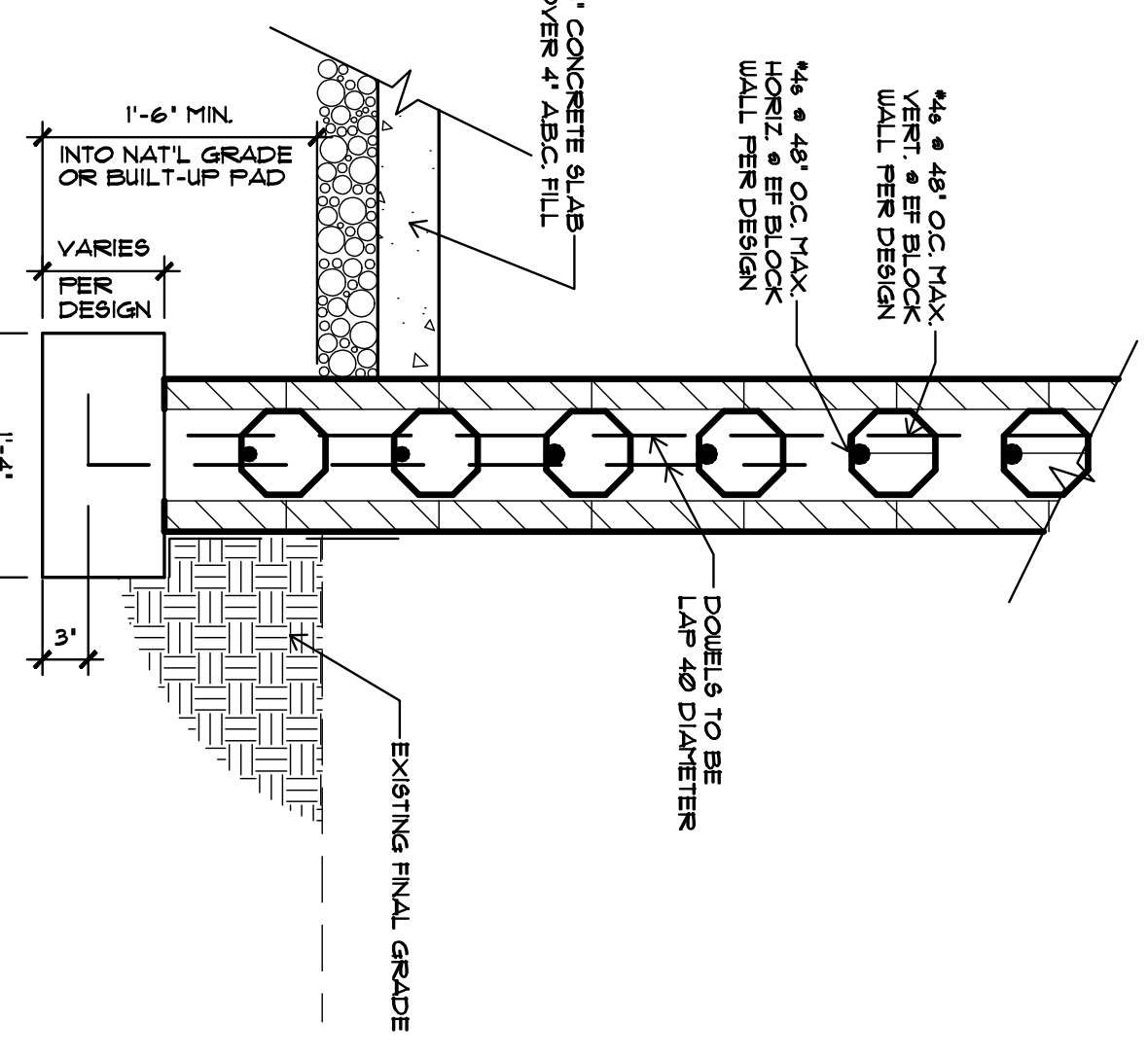
7 BEAM BEARING DETAIL  
SCALE: 1" = 1'-0"



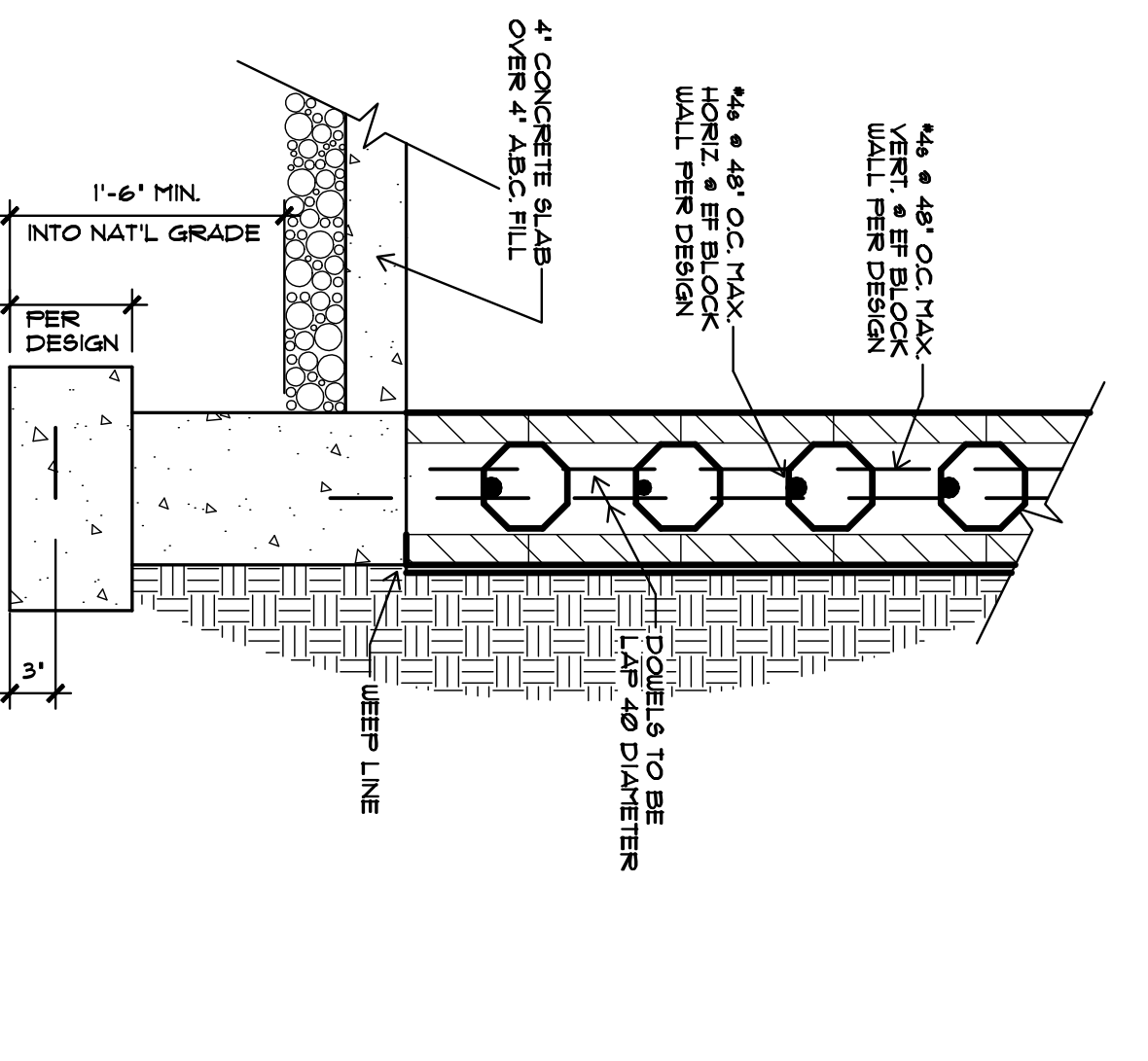
5 NON-BEARING WALL DETAIL  
SCALE: 1" = 1'-0"



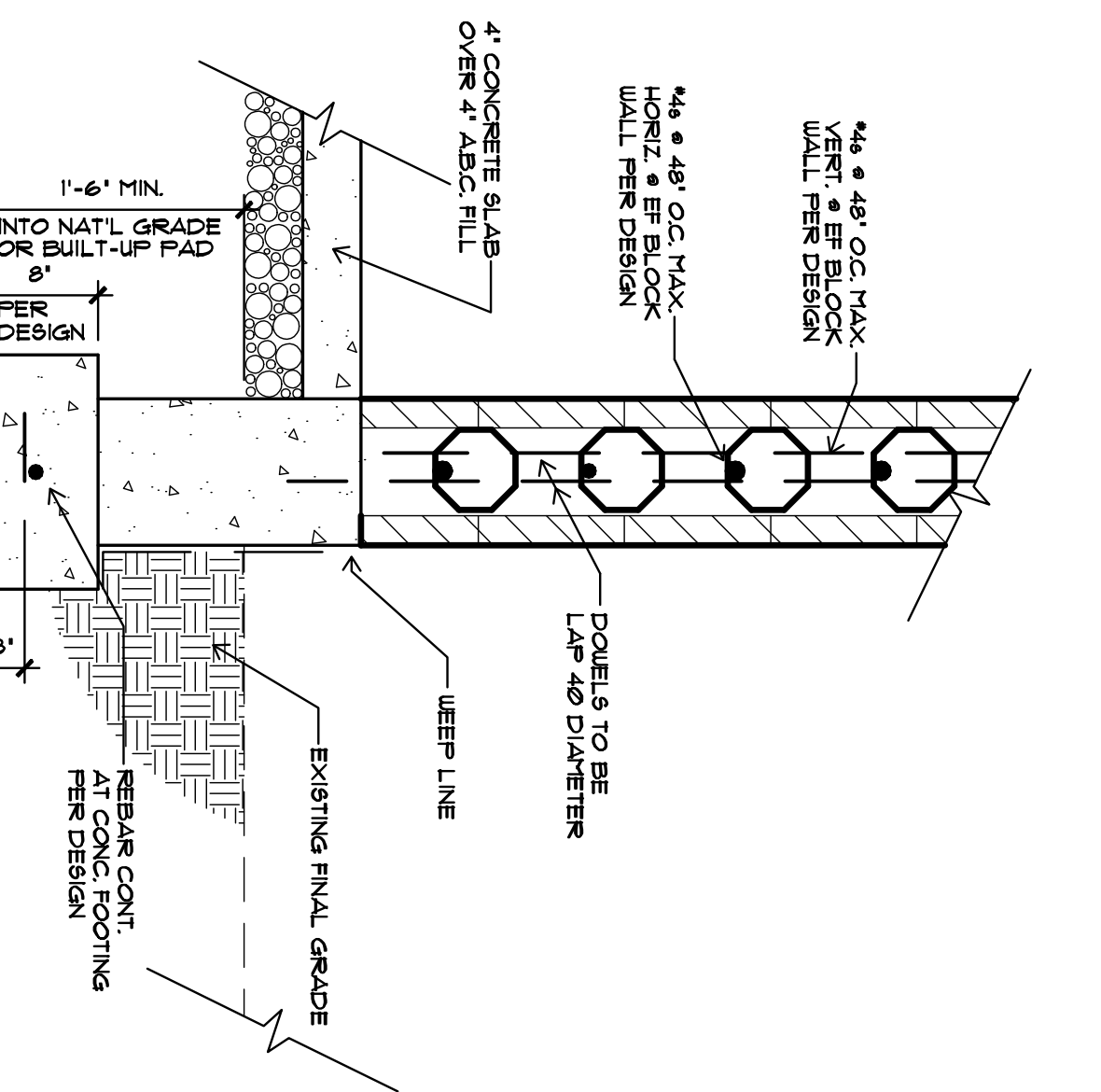
6 WALL ELEVATION DETAIL  
SCALE: 1" = 1'-0"



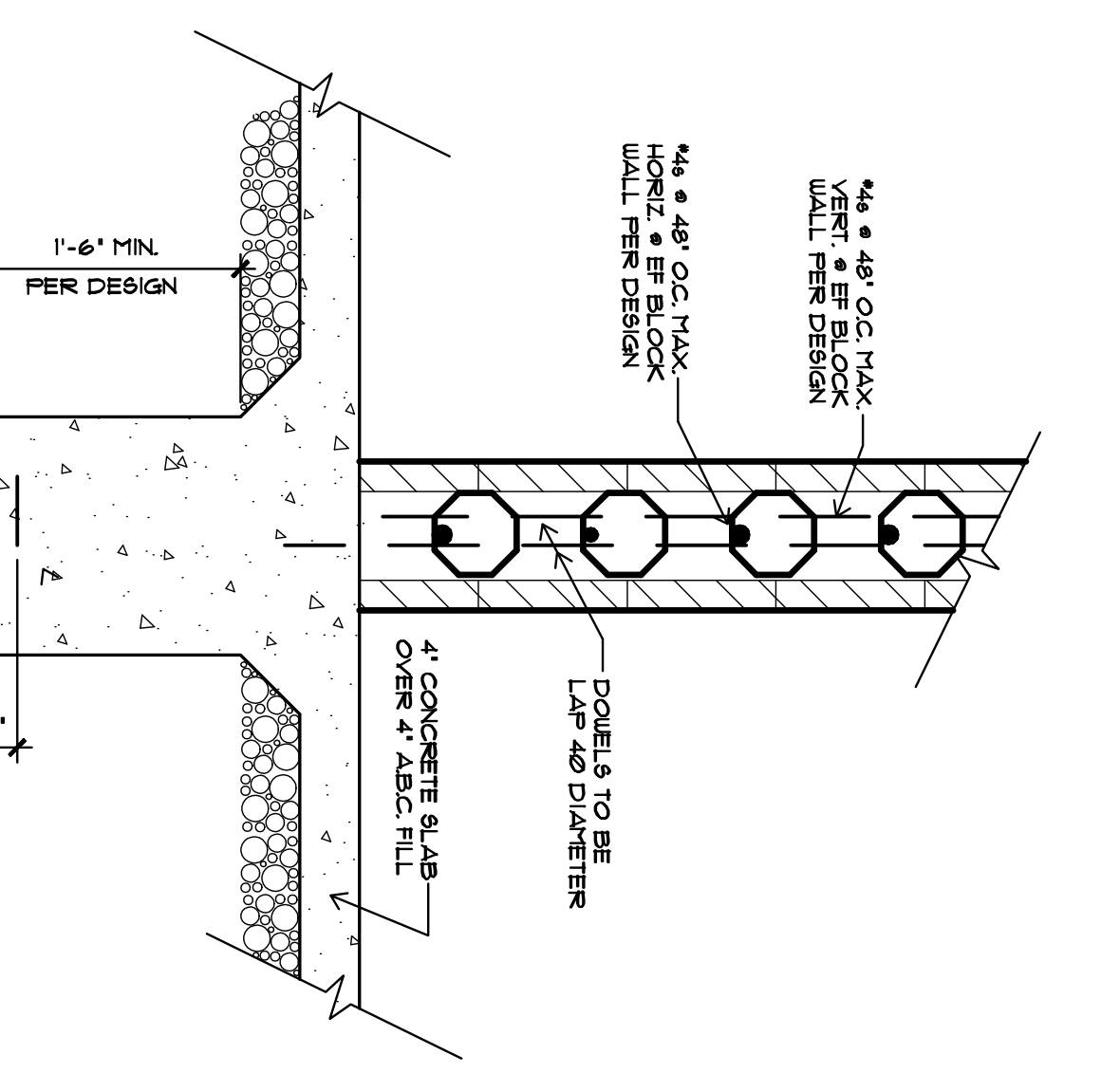
13 FOOTING - CONCRETE STEM  
SCALE: 1" = 1'-0"



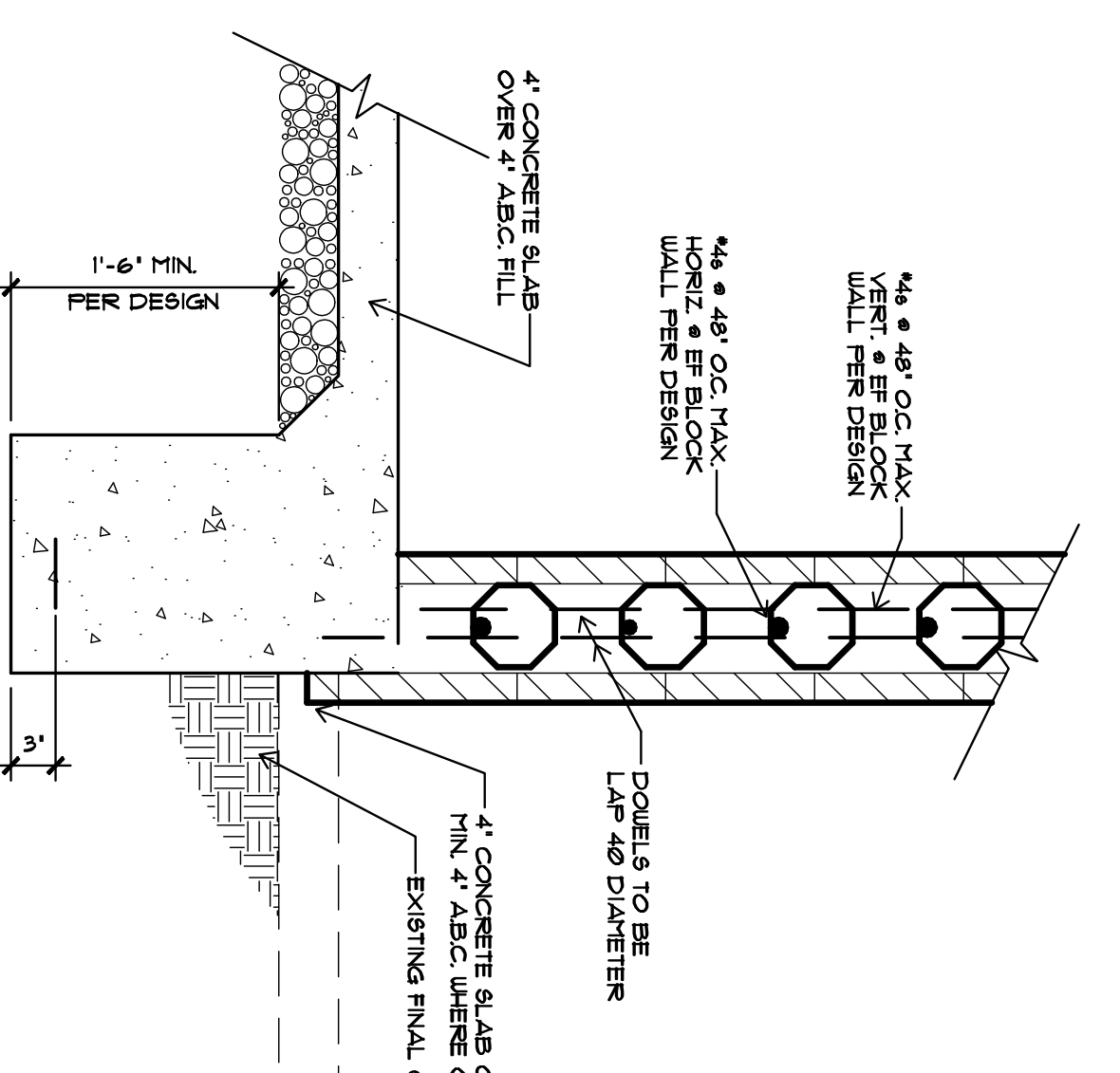
12 FOOTING - BASEMENT WALL  
SCALE: 1" = 1'-0"



11 FOOTING - CONCRETE STEM  
SCALE: 1" = 1'-0"



10 INTERIOR BEARING WALL  
SCALE: 1" = 1'-0"



9 FOOTING - TURNDOWN  
SCALE: 1" = 1'-0"